

The Matrons' Council of Great Britain and Ireland.

A RECENT MEMBER.

Miss Ethel Nicholson, Lady Superintendent of the Manchester Children's Hospital, Pendlebury, and recently elected a member of the Matrons' Council of Great Britain and Ireland, whose portrait we publish on this page, was trained at St. Bartholomew's Hospital, London, entering it in 1903 for a four years' term. On obtaining her certificate Miss Nicholson was appointed Assistant Masseuse to the hospital, a post she held for six months. In 1907 she was appointed Night Sister to the Children's Hospital, Shadwell, E., and after a short time was offered by the late Miss Isla Stewart, Matron of St. Bartholomew's Hospital, the post of Matron's Secretary, which she held for a year, and subsequently was appointed Home Sister, having in the meantime gained considerable experience in the hospital kitchens. She retained this position until appointed in September last to that she now holds of Lady Superintendent to the Manchester Children's Hospital, Pendlebury.

Previous to entering St. Bartholomew's Hospital, she was trained at the Manchester Children's Hospital, Pendlebury, and it is a

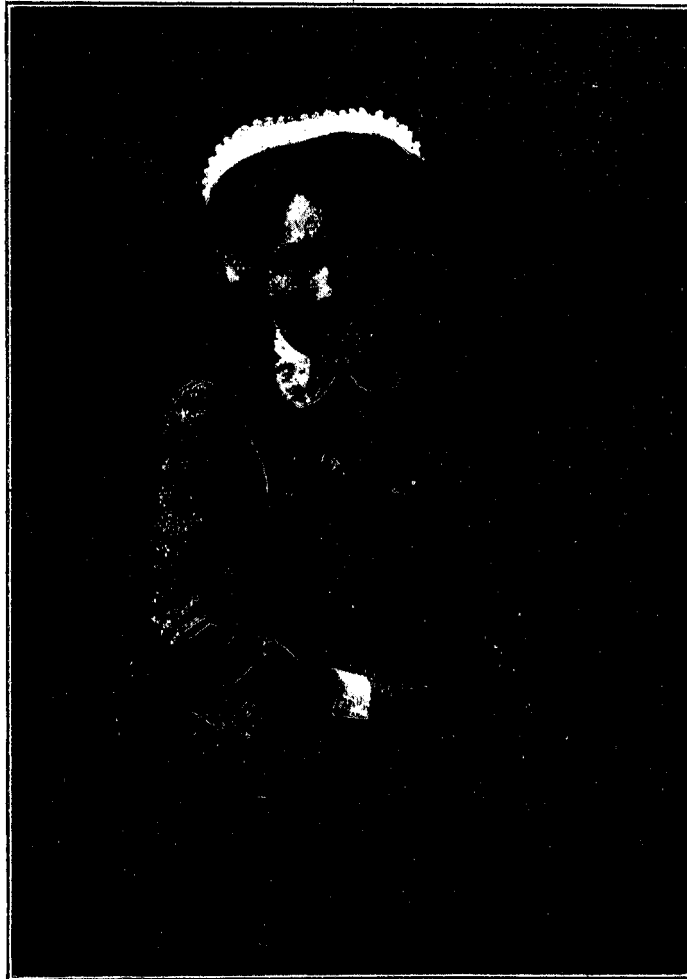
great compliment that she should have been appointed Superintendent of her first training school, in which institution she naturally takes a great interest. Miss Nicholson is a member of the League of St. Bartholomew's Hospital Nurses, and of the Society for the State Registration of Trained Nurses.

At St. Bartholomew's Hospital Miss Nicholson, who is bright, clever, and charm-

ing, was very popular, and her resignation was generally regretted, although at the same time, her colleagues were glad that her work and talents should be recognised by those who had the best means of judging of her abilities, and that the Committee of the Manchester Children's Hospital should thus have honoured one of its own former pupils, whose subsequent career had reflected credit on the school.

The Manchester Children's Hospital is one of which the reputation stands high, and it is pleasant to know that its work is appreciated by the parents of

the children whom it serves. Speaking at the annual meeting recently, the Senior Surgeon, Mr. J. Howson Ray, bore testimony to the assistance which the medical staff had received from the parents in Manchester and Salford, who did their very best to further the work begun at the Hospital, on which so much depended.



Miss ETHEL NICHOLSON,
Lady Superintendent, Manchester Children's Hospital, Pendlebury.

[previous page](#)

[next page](#)